

**North Devon Link Road – NDLR – A361  
(Portmore to Bourners Bridge)  
Traffic Bulletin – 16.01.24**

Further to our Bulletin of 5<sup>th</sup> January 2024, we are now planning to close Station Road at South Molton for 10 x days. This closure is to facilitate permanent works, including the full depth reconstruction of Station Road junction. Full details of the closure and diversion routes are listed on page 2 & 3.

Night time closures between Landkey Roundabout and North Aller Roundabout from 15<sup>th</sup> – 17<sup>th</sup> January 2024 have now been rescheduled

Please find in this bulletin details of upcoming traffic management on the North Devon Link Road in January and February 2024.

We apologise for any inconvenience

**Night time closures Jan / Feb 2024**

As previously communicated, other planned Traffic Management remains as previously detailed including:

- A. Night time closure between Bish Mill and North Aller from: 18<sup>th</sup> January to 21<sup>st</sup> January 2024
- B. Night time closure between Landkey and North Aller from 22<sup>nd</sup> January to 10<sup>th</sup> February 2024.
- C. Closure of road between West Buckland and A361 between 11<sup>th</sup> February to 17<sup>th</sup> February 2024
- D. Closure of road between Portmore Roundabout and Landkey Roundabout from 12<sup>th</sup> February to 17<sup>th</sup> February 2024.

Additional information regarding closures & diversion routes are detailed on pages 2, 3, 4, 5, & 6 of this traffic bulletin

**GRIFFITHS**

For all Traffic related matters  
24/7 call Traffic Safety Control  
Officer (TSCO)

Tel: 07889 225393\*

Your Public Liaison Officer for  
the NDLR is Lynda Sudlow of  
Griffiths. She can be contacted:

E: [NDLR@alungriffiths.co.uk](mailto:NDLR@alungriffiths.co.uk)

T: 0330 041 4637\*

Calls are monitored out of  
normal work hours and a  
voicemail facility is available.

Please check out our project  
website :

[community.alungriffiths.co.uk](http://community.alungriffiths.co.uk)

If you would like to subscribe to  
receive future Newsletters and  
Bulletins, please click [HERE](#) and  
complete the online form for Mail  
Chimp. OR use this QR code:



**SCAN ME**

**CONSIDERATE  
CONSTRUCTORS  
SCHEME**



Calls to these numbers are charged at  
national call rates and included in  
inclusive minute plans from landlines  
and mobiles

# North Devon Link Road – NDLR – A361 (Portmore to Borners Bridge) Traffic Bulletin – 16.01.24

**GRIFFITHS**

Please find in this bulletin details of upcoming traffic management on the North Devon Link Road in January and February 2024.

There will be significant works carried out in the upcoming period. Most of the works will be carried out at night to minimize disruption to the travelling public. We will continue to update you via separate bulletins with more detail of the works.

We apologise for any inconvenience

## 24Hr Closure: Station Road – 30<sup>th</sup> Jan – 9<sup>th</sup> Feb 2024

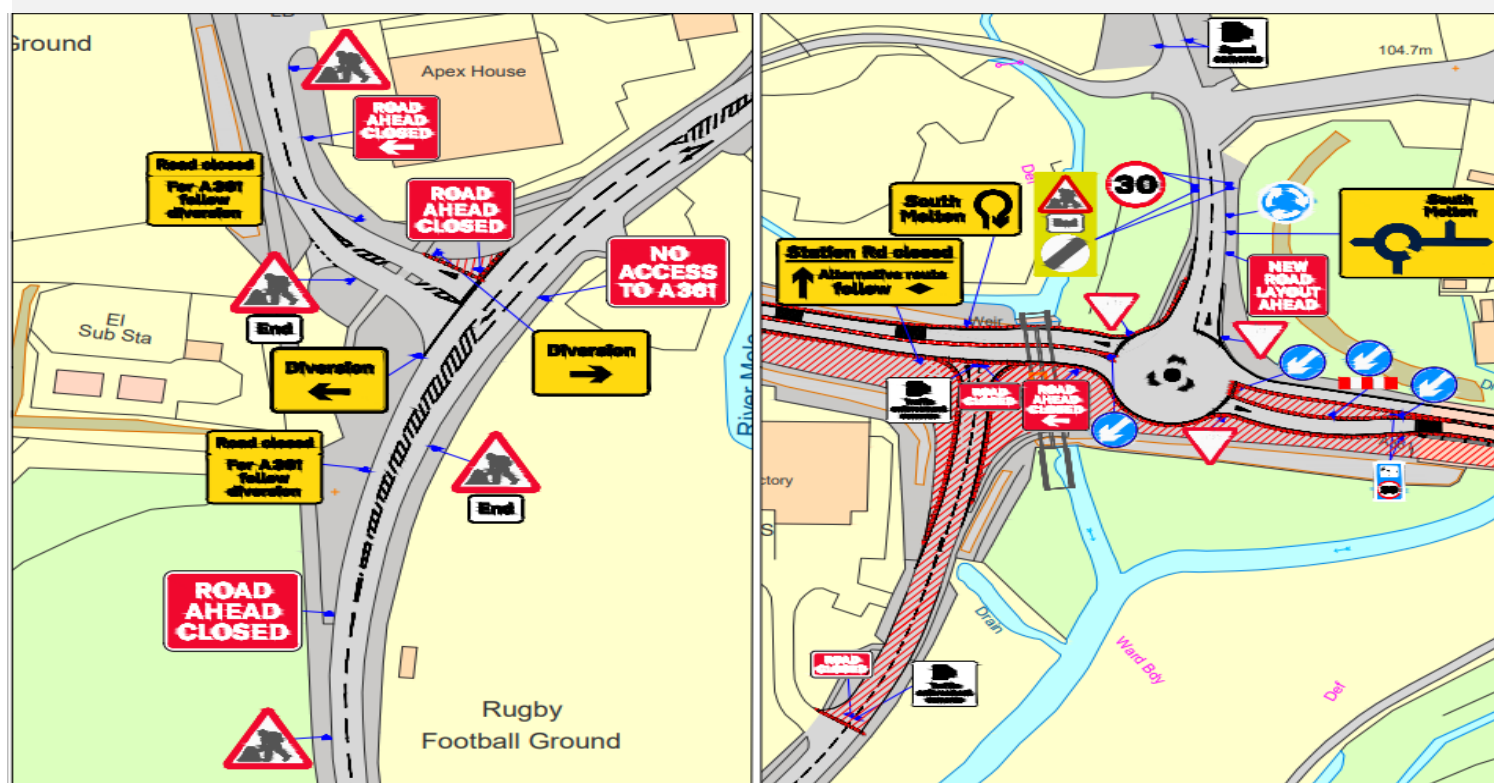
Day / Date	Start	Finish
Tues: 30.01.24	4am	Fri: 09.02.24 - 6am

## Station Road Full Closure – Jan / Feb 2024

During the closure of Station Road, new permanent surfacing will be completed, white lining, kerbing and a central island will be completed.

Please see Page 2 of this bulletin for Diversion Maps.

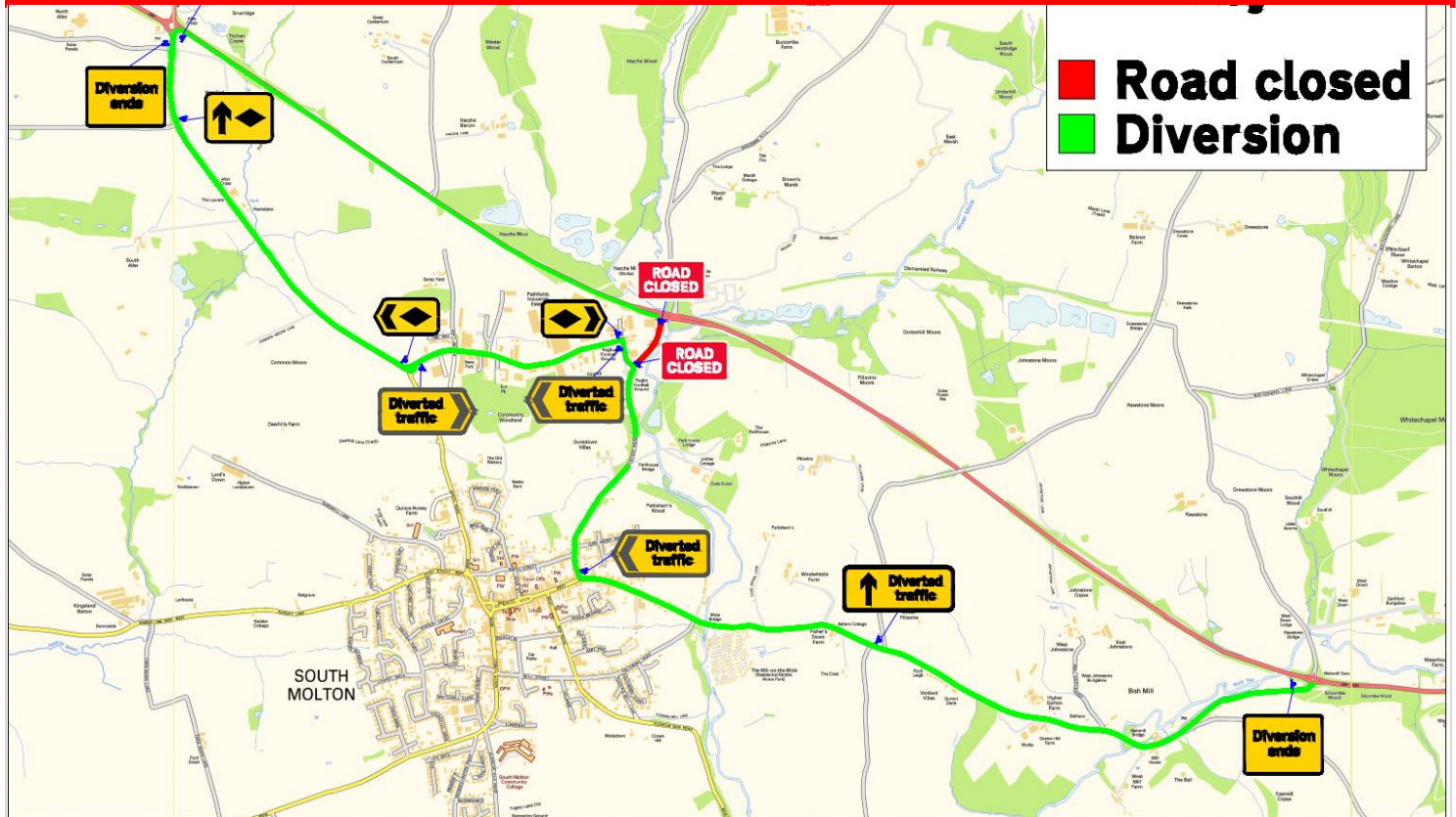
Access to North Molton will remain open. We apologise for any inconvenience.



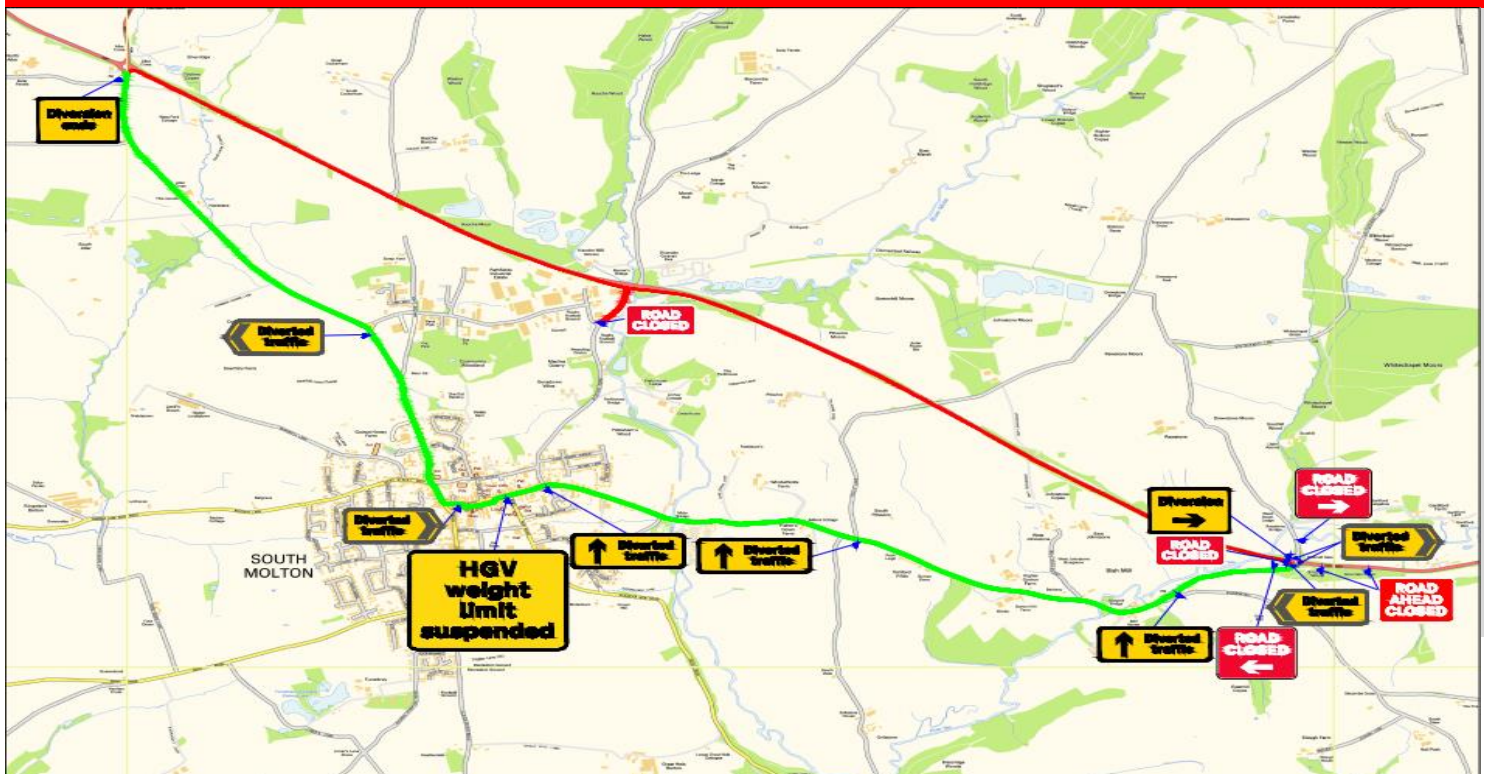
**North Devon Link Road – NDLR – A361  
(Portmore to Borneers Bridge)  
Traffic Bulletin – 16.01.24**

**GRIFFITHS**

**Station Road – Diversion Route**



**Bish Mill Roundabout to North Aller Roundabout Diversion Route**



# North Devon Link Road – NDLR – A361 (Portmore to Borners Bridge) Traffic Bulletin – 16.01.24

**GRIFFITHS**

## Night Closures – Bish Mill Roundabout to North Aller Roundabout - Jan 2024

Further essential works are planned at Borners Bridge, South Molton. Please see dates below. Access to North Molton will remain open. There will be a further closure of Station Road on Saturday 20<sup>th</sup>, the A361 will remain open in both directions. Please see Diversion Maps on page 2 of this bulletin. We apologise for any inconvenience

Day / Date	Start	Finish
Thur: 18.01.24	8pm	Fri: 19.01.24 - 6am
Fri: 19.01.24	8pm	Sat: 20.01.24 - 6am
Sat: 20.01.24	8pm	Sun: 21.01.24 - 6am

## Night Closures – Landkey Roundabout to North Aller Roundabout - Jan/Feb 2024

Night work continues apace between Landkey to North Aller on the following dates for essential works and resurfacing . Please page 3 the for Diversion Map. We apologise for any inconvenience

Day / Date	Start	Finish
Mon: 22.01.24	8pm	Tues: 23.01.24 - 6am
Tues 23.01.24	8pm	Wed: 24.01.24 – 6am
Wed: 24.01.24	8pm	Thurs: 25.01.24 - 6am
Thur: 25.01.24	8pm	Fri: 26.01.24 - 6am
Fri: 26.01.24	8pm	Sat: 27.01.24 - 6am
Mon: 29.01.24	8pm	Tues: 30.01.24 - 6am
Tues 30.01.24	8pm	Wed: 31.01.24 – 6am
Wed: 31.01.24	8pm	Thurs: 01.02.24 - 6am
Thur: 01.02.24	8pm	Fri: 02.02.24 - 6am
Fri: 02.02.24	8pm	Sat: 03.02.24 - 6am
Mon: 05.02.24	8pm	Tues: 06.02.24 - 6am
Tues: 06.02.24	8pm	Wed: 07.02.24 – 6am
Wed: 07.02.24	8pm	Thurs: 08.02.24 - 6am
Thur: 08.02.24	8pm	Fri: 09.02.24 - 6am
Fri: 09.02.24	8pm	Sat: 10.02.24 - 6am

Further Bulletins will be issued regularly to give more details and confirm dates

# North Devon Link Road – NDLR – A361 (Portmore to Bourners Bridge) Traffic Bulletin – 16.01.24

**GRIFFITHS**

## Closure of Side Road at West Buckland

Full 24hr road closure is required to allow upgrade of the existing junction, works will include kerbing drainage and full road construction.

Day / Date

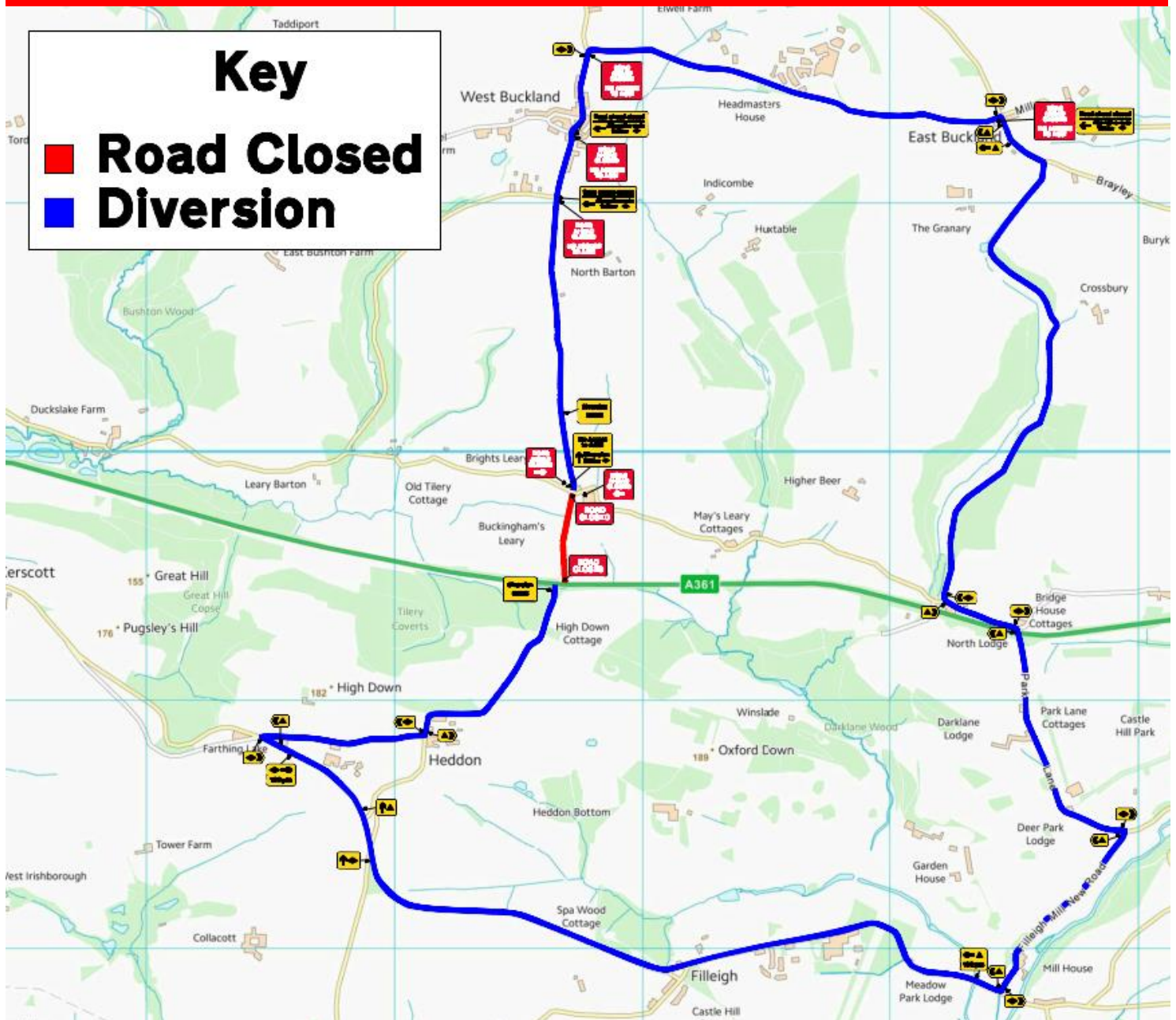
Sunday : 11.02.24 to  
Saturday 17.02.24

Full 24 hour road closure between Buckingham Leary, West  
Buckland and A361 West Buckland Junction

## Diversion Map – West Buckland Junction

### Key

■ Road Closed  
■ Diversion



Devon  
County Council

CONSIDERATE  
CONSTRUCTORS  
SCHEME

**GRIFFITHS**

# North Devon Link Road – NDLR – A361 (Portmore to Borne's Bridge) Traffic Bulletin – 16.01.24

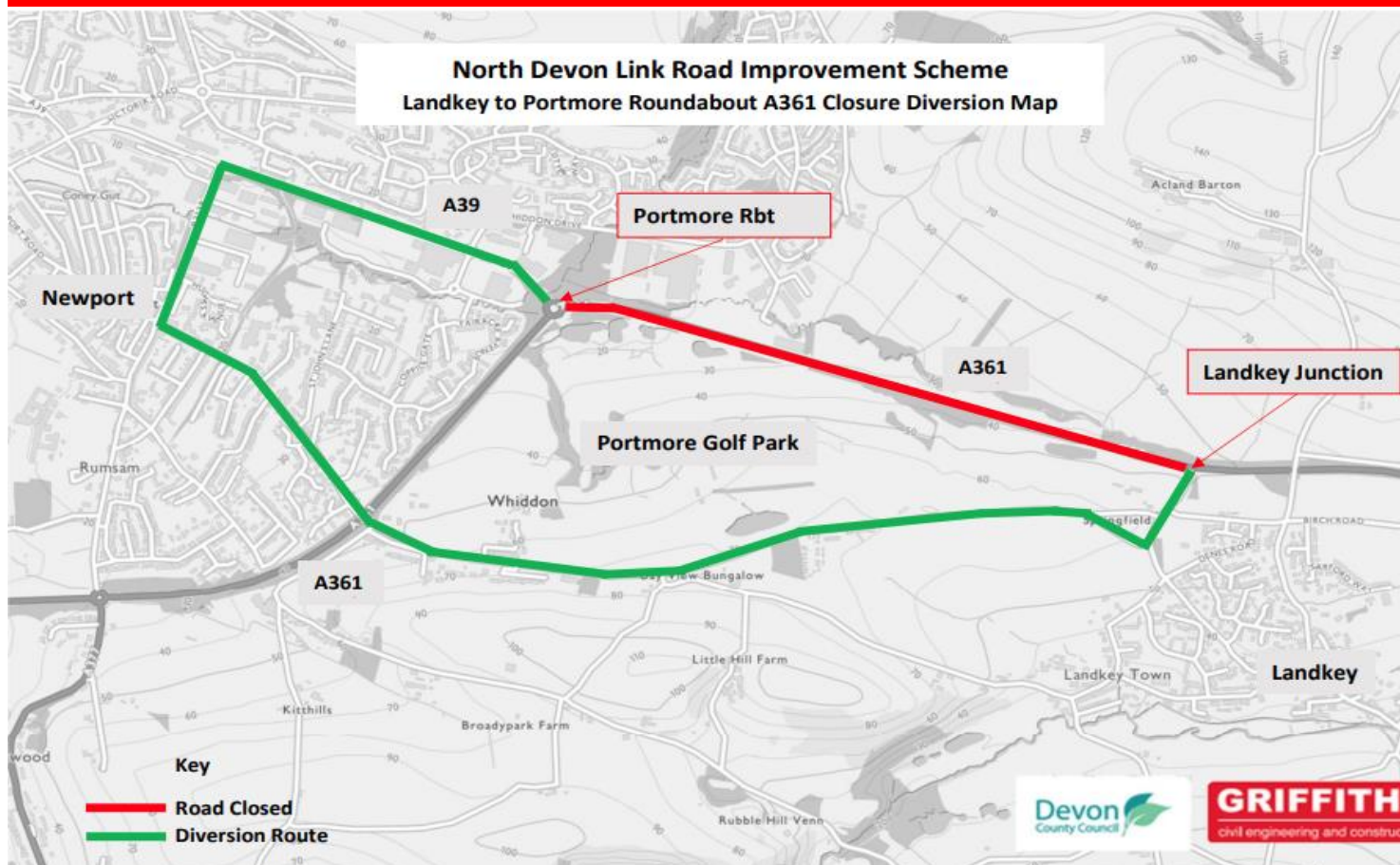
**GRIFFITHS**

## Night Closures – Landkey Roundabout to Portmore Roundabout – Feb 2024

Road closures are required to allow the removal of temporary barrier installed along the route, completion of upgrades to existing drainage network and completion of the road construction around Landkey Junction.

Day / Date	Start	Finish
Mon: 12.02.24	8pm	Tues: 13.02.24 - 6am
Tues: 13.02.24	8pm	Wed: 14.02.24 - 6am
Wed: 14.02.24	8pm	Thur: 15.02.24 - 6am
Thur: 15.02.24	8pm	Fri: 16.02.24 - 6am
Fri: 16.02.24	8pm	Sat: 17.02.24 - 6am

## Diversion Map – Landkey Roundabout to Portmore Roundabout



Further Bulletins will be issued regularly to give more details and confirm dates

**North Devon Link Road – NDLR – A361  
(Portmore to Borners Bridge)  
Traffic Bulletin – 16.01.24**

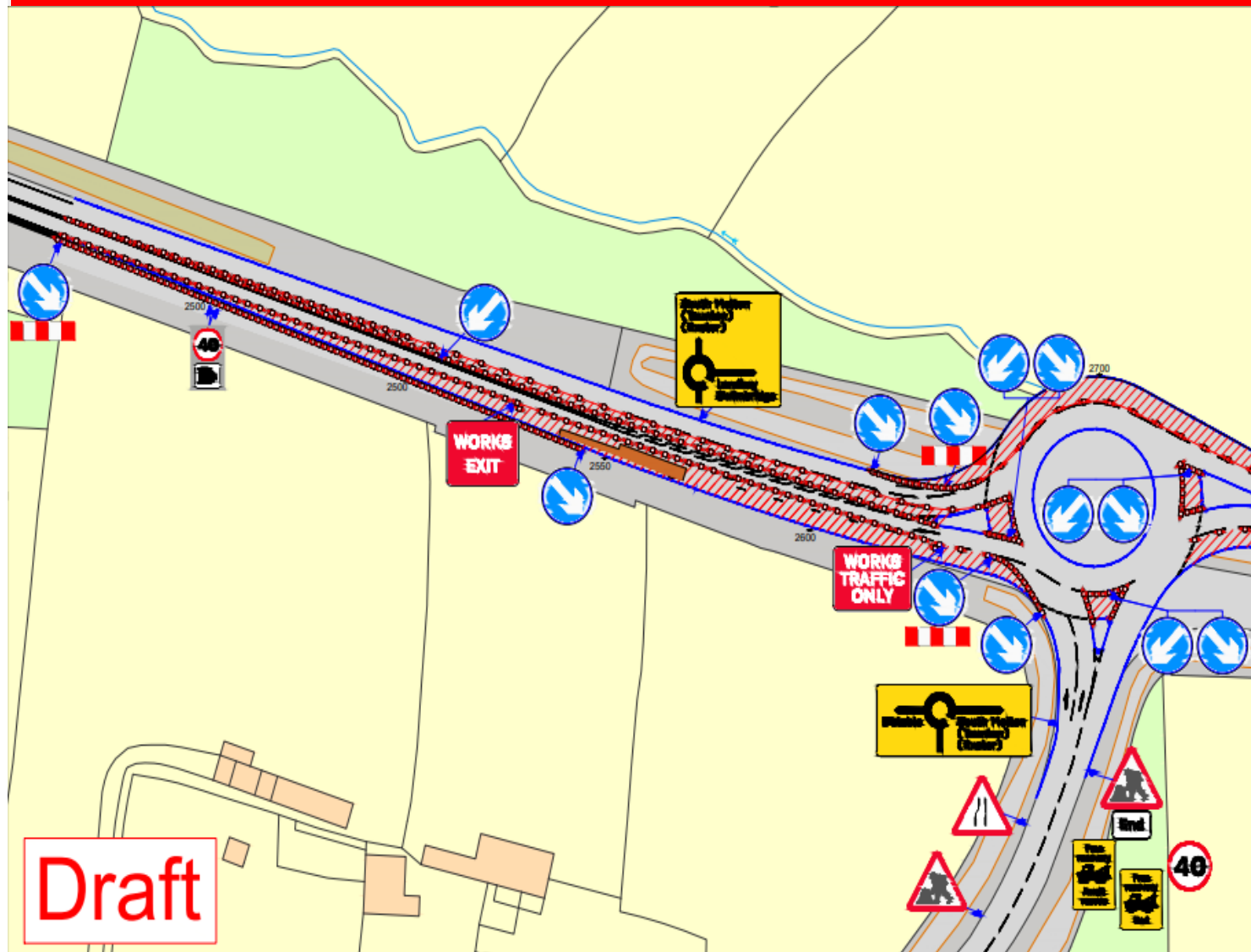
**GRIFFITHS**

**New Road Layout Landkey Roundabout to Portmore Roundabout – Feb 2024**

There will be a new road layout from Landkey Roundabout to Portmore Roundabout to facilitate the Full Depth reconstruction of part of the new carriageway.

Day / Date	Start	Finish
Tues: 13.02.24	5am	Sat : 17.02.24 - 5am

**New Road Layout – Landkey Roundabout to Portmore Roundabout**



Further Bulletins will be issued regularly to give more details and confirm dates